

MEI

craig@ccrma.stanford.edu

1 March 2018

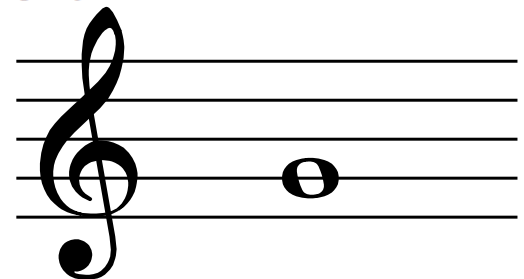
MEI

- Music Encoding Initiative: XML representation for music with focus on academic research
- Features for generating critical editions of a work (with multiple source that are not the same)
- Secondary concentration on pre-modern western musical notation (mensuration and neumes).

- Examples: <http://music-encoding.org/documentation/samples>

```
<mei version="1.7b">
  <meihead>
    <meiid>20071029101306082</meiid>
    <filedesc>
      <title>Hello World!</title>
      <pubstmt/>
    </filedesc>
  </meihead>
  <work>
    <music>
      <mdiv>
        <score>
          <scoredef meter.count="4" meter.unit="4" key.sig="0">
            <staffgrp>
              <staffdef n="1" id="P1" label.full="Music" clef.line="2" clef.shape="G" midi.div="1" key.sig="0"/>
            </staffgrp>
          </scoredef>
          <section>
            <scoredef meter.count="4" meter.unit="4" key.sig="0"/>
            <measure n="1" id="dle6">
              <staff>
                <layer>
                  <note id="dle24" tstamp="0" pname="c" oct="4" dur="1" dur.ges="4"/>
                </layer>
              </staff>
            </measure>
          </section>
        </score>
      </mdiv>
    </music>
  </work>
</mei>
```

Hello World!



TEI

- MEI is modeled after the Text Encoding Initiative: <http://www.tei-c.org/index.xml>
“a consortium which collectively develops and maintains a standard
for the representation of texts in digital form.”

```
<TEI xmlns='http://www.tei-c.org/ns/1.0' xmlns:xml='http://www.w3.org/XML/1998 namespace'
xml:id="A050153">
<teiHeader>
<fileDesc>
<titleStmt>
<title level="s">Aktuelle Nachrichten der Carl-Maria von Weber-Gesamtausgabe</title> <title
level="a">Quellcode von weber-gesamtausgabe.de auf GitHub verfügbar</title> <author
key="A009001">Peter Stadler</author>
</titleStmt> <publicationStmt>
<date when="2013-02-06T12:02:00"/>
</publicationStmt> <sourceDesc>
<p>born digital</p>
</sourceDesc>
</fileDesc> <profileDesc>
<textClass>
<keywords scheme="WeGA_cat">
<term>announcement</term>
</keywords>
</textClass>
</profileDesc>
</teiHeader> <text type="news">
<body>
<div xmlns:xml='http://www.w3.org/XML/1998/namespace' xml:lang="de">
<p>
Der Quellcode der Webapplikation weber-gesamtausgabe.de ist nun (endlich) unter <ref
target="https://github.com/Edirom/WeGA-WebApp">https://github.com/Edirom/WeGA-
WebApp</ref> frei verfügbar gemacht worden. <rs type="news" key="A050256">Vor ein paar
Wochen wurden bereits die XML-Schemata veröffentlicht</rs>, so dass gewissermaßen das
technische Fundament der Digitalen Weber-Edition jetzt auch offiziell frei zugänglich ist. Das
Ganze ist zwar auf unsere Ausgabe maßgeschneidert, ich hoffe aber doch, dass es zumindest als
Anhaltspunkt und Diskussionsgrundlage für ähnliche Editionsprojekte dienen mag.
</p> <p>Ein paar weiterführende Informationen finden sich auf den genannten Seiten, wobei die
Dokumentation des Ganzen noch ein großes Desperat ist. Ich freue mich über alle Fragen und
Kommentare und stehe auch bei einer geplanten Nachnutzung gerne mit Rat und Tat zur Seite!</
p>
</div>
</body>
</text>
</TEI>
```



rendering

Quellcode von weber-gesamtausgabe.de auf GitHub verfügbar

Der Quellcode der Webapplikation weber-gesamtausgabe.de ist nun (endlich) unter <https://github.com/Edirom/WeGA-WebApp> frei verfügbar gemacht worden. Vor ein paar Wochen wurden bereits die XML-Schemata veröffentlicht, so dass gewissermaßen das technische Fundament der Digitalen Weber-Edition jetzt auch offiziell frei zugänglich ist. Das Ganze ist zwar auf unsere Ausgabe maßgeschneidert, ich hoffe aber doch, dass es zumindest als Anhaltspunkt und Diskussionsgrundlage für ähnliche Editionsprojekte dienen mag.

Ein paar weiterführende Informationen finden sich auf den genannten Seiten, wobei die Dokumentation des Ganzen noch ein großes Desperat ist. Ich freue mich über alle Fragen und Kommentare und stehe auch bei einer geplanten Nachnutzung gerne mit Rat und Tat zur Seite!

Peter Stadler, Wednesday, February 6, 2013

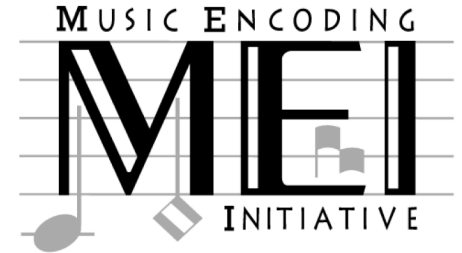
- HTML on steroids
- Database format which can be transformed into HTML

<http://www.weber-gesamtausgabe.de/en/A009001/News/A050153>

Formal Description/Documentation

<http://music-encoding.org/documentation>

- Currently three components:
 - **mei-CMN** (Common western Music Notation)
 - **mei-Mensural** (precursor to CMN)
 - **mei-Neumes** (precursor to mensural notation)



- Element Tag Library:

<http://music-encoding.org/documentation/3.0.0/elements>

- ODD (XML structure definition):

<https://github.com/music-encoding/music-encoding>

DTD/Schema/RelaxNG/ODD

- Method to verify structure of XML and, to some degree, content

DTD: http://en.wikipedia.org/wiki/Document_Type_Definition
http://www.w3schools.com/dtd/dtd_intro.asp

- Original method for formal description of XML file structure (XML 1.0).

Schema: [http://en.wikipedia.org/wiki/XML_Schema_\(W3C\)](http://en.wikipedia.org/wiki/XML_Schema_(W3C))

- 2001: Schema is also in XML format, a successor of DTDs
- XSD (XML Schema Definition)
- More data typing than DTDs
- Namespaces, such as “xml:id”

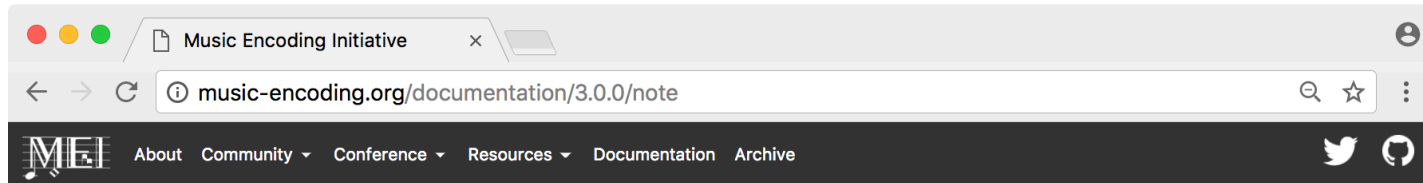
RelaxNG: http://en.wikipedia.org/wiki/RELAX_NG

- REgular LAnguage for Xml Next Generation
- 2009

ODD: TEI's meta representation to automatically generate Schema or RelaxNG format description.

Documentation

- <http://music-encoding.org/documentation/3.0.0/chapters>
- <http://music-encoding.org/documentation/3.0.0/elements>



<note>

<note> A single pitched event.	
Module	MEI.shared
Attributes	<p>@accid (optional) Captures a written accidental. Value conforms to data.ACCIDENTAL.EXPLICIT . (→ att.accidental)</p> <p>@accid.ges (optional) Records the performed pitch inflection. Value conforms to data.ACCIDENTAL.IMPLICIT . (→ att.accidental.performed)</p> <p>@altsym (optional) Provides a way of pointing to a user-defined symbol. It must contain an ID of a <symbolDef> element elsewhere in the document. Value conforms to data.URI . (→ att.altsym)</p> <p>@artic (optional) Encodes the written articulation(s). Articulations are normally encoded in order from the note head outward; that is, away from the stem. See additional notes at att.vis.note. Only articulations should be encoded in the artic attribute; for example, fingerings should be encoded using the <fingering> element. One or more values from data.ARTICULATION , separated by spaces. (→ att.articulation)</p> <p>@artic.ges (optional) Records performed articulation that differs from the written value. One or more values from data.ARTICULATION , separated by spaces. (→ att.articulation.performed)</p> <p>@beam (optional) Indicates that this event is "under a beam". One or more values from data.BEAM , separated by spaces. (→ att.beamed)</p> <p>@breaksec (optional) Presence of this attribute indicates that the secondary beam should be broken following this note/chord. The value of the attribute records the number of beams which should remain unbroken. Value of datatype positiveInteger. (→ att.beamsecondary)</p> <p>@color (optional) Used to indicate visual appearance. Do not confuse this with the</p>

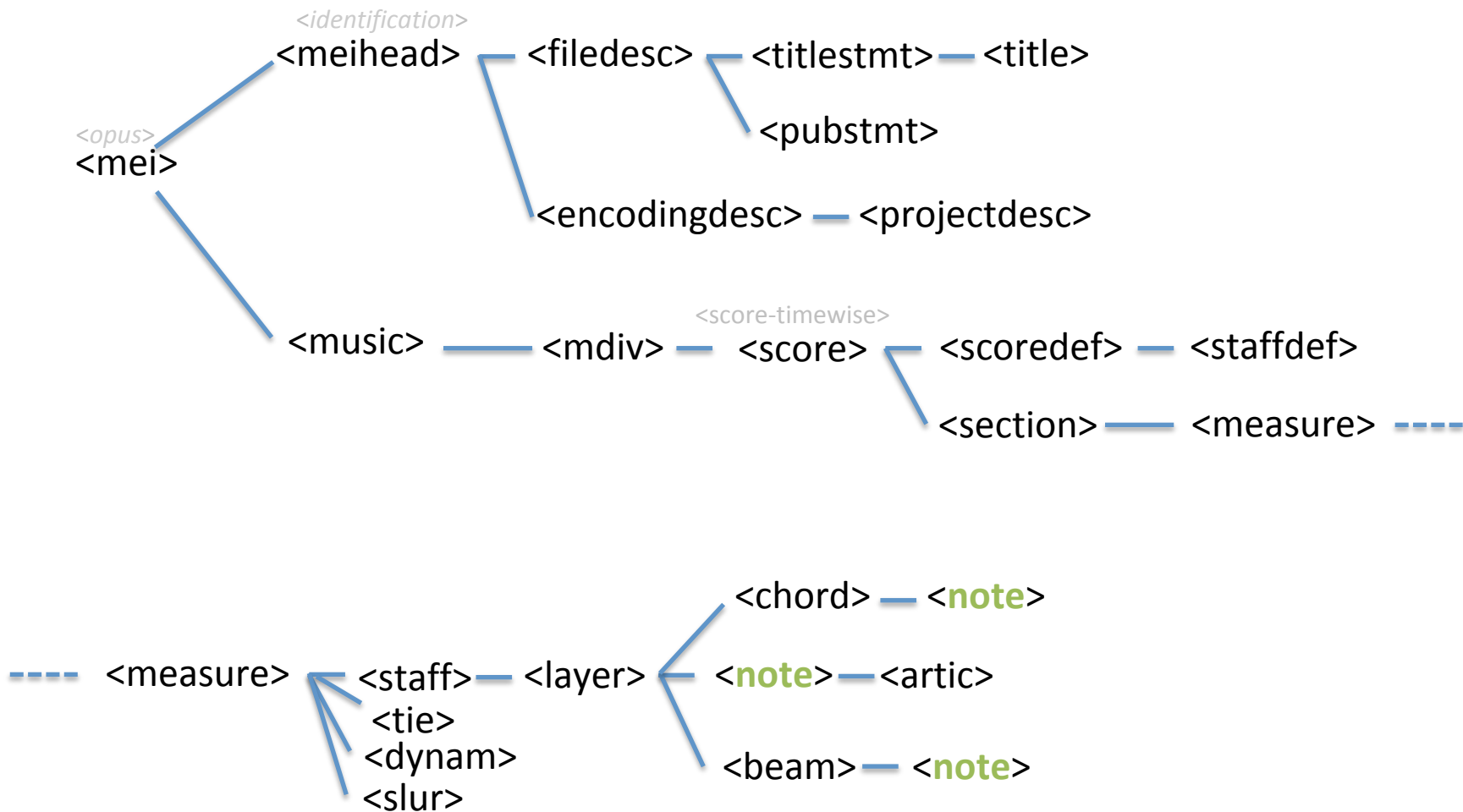
MEI Guidelines Version 3.0.0

[MEI Guidelines](#)
[Elements](#)
[Attributes](#)
[Model Classes](#)
[Data Types](#)

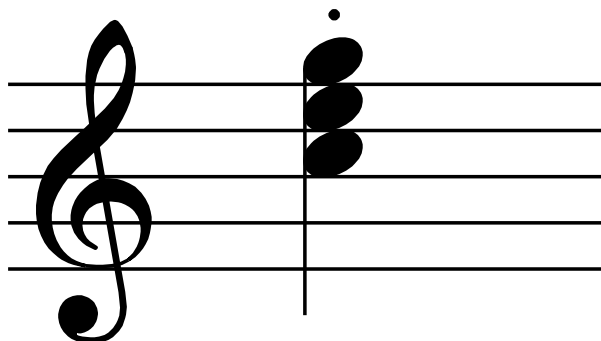
MEI Elements

[<abbr>](#)
[<accessRestrict>](#)
[<accid>](#)
[<actor>](#)
[<add>](#)
[<addName>](#)
[<addrLine>](#)
[<address>](#)
[<altId>](#)
[<anchoredText>](#)
[<annot>](#)
[<app>](#)
[<appInfo>](#)
[<application>](#)

Basic MEI structure



Chords



MEI

```
<chord xml:id="d11e1" dur="4" dur.ges="1" stem.dir="down">
  <artic value="stacc"/>
  <note xml:id="d1e85" pname="g" oct="5"/>
  <note xml:id="d1e102" pname="e" oct="5"/>
  <note xml:id="d1e118" pname="c" oct="5"/>
</chord>
```

MuseData

G5	1	1	q	d	.
E5	1	1	q	d	
C5	1	1	q	d	

MusicXML

```
<note default-x="84">
  <pitch>
    <step>C</step>
    <octave>5</octave>
  </pitch>
  <duration>2</duration>
  <voice>1</voice>
  <type>quarter</type>
  <stem default-y="-50.5">down</stem>
  <notations>
    <articulations>
      <staccato default-x="3" default-y="15" placement="above"/>
    </articulations>
  </notations>
</note>
<note default-x="84">
  <chord/>
  <pitch>
    <step>E</step>
    <octave>5</octave>
  </pitch>
  <duration>2</duration>
  <voice>1</voice>
  <type>quarter</type>
  <stem>down</stem>
</note>
<note default-x="84">
  <chord/>
  <pitch>
    <step>G</step>
    <octave>5</octave>
  </pitch>
  <duration>2</duration>
  <voice>1</voice>
  <type>quarter</type>
  <stem>down</stem>
</note>
```


Beams



MEI

```
<note xml:id="n_sc_14_0" pname="b" oct="3" dur="4"/>
<beam>
  <note xml:id="n_sc_15_0" pname="c" oct="4" dur="8"/>
  <note xml:id="n_sc_16_0" pname="b" oct="3" dur="8"/>
</beam>
<note xml:id="n_sc_17_0" pname="a" oct="3" dur="4"/>
```

MuseData

```
B3  2  1 q
C4  1  1 e  [
B3  1  1 e  ]
A3  2  1 q
```

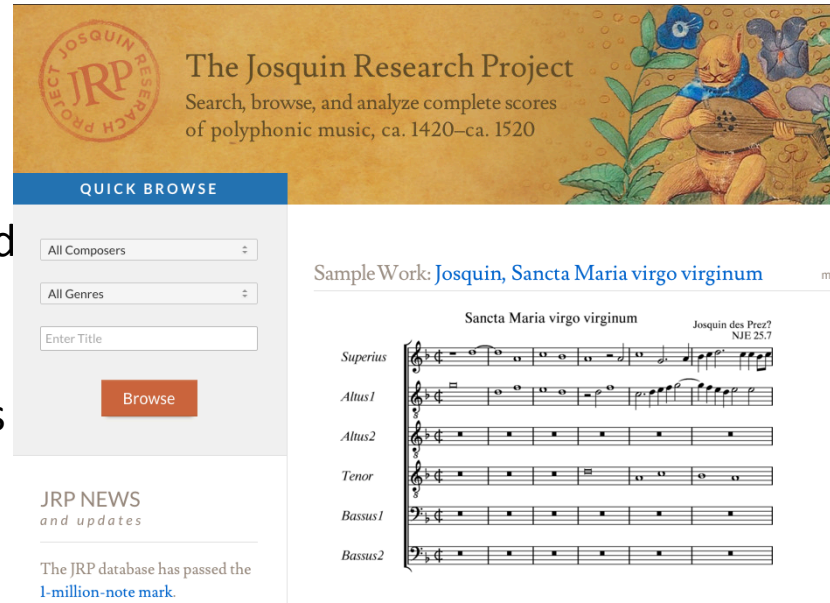
MusicXML

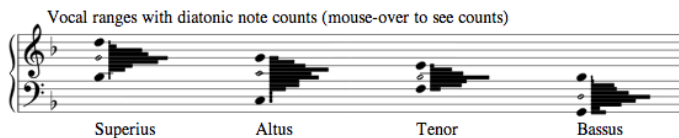
```
<note>
  <pitch>
    <step>B</step>
    <octave>3</octave>
  </pitch>
  <duration>2</duration>
  <voice>1</voice>
  <type>quarter</type>
  <stem>down</stem>
</note>
<note>
  <pitch>
    <step>C</step>
    <octave>4</octave>
  </pitch>
  <duration>1</duration>
  <voice>1</voice>
  <type>eighth</type>
  <stem>down</stem>
  <beam number="1">begin</beam>
</note>
<note>
  <pitch>
    <step>B</step>
    <octave>3</octave>
  </pitch>
  <duration>1</duration>
  <voice>1</voice>
  <type>eighth</type>
  <stem>down</stem>
  <beam number="1">end</beam>
</note>
<note>
  <pitch>
    <step>A</step>
    <octave>3</octave>
  </pitch>
  <duration>2</duration>
  <voice>1</voice>
  <type>quarter</type>
  <stem>down</stem>
</note>
```

MEI data on the web

<http://jrp.ccarh.org>

- JRP: database of music from the early Renaissance (1420-1520)
- Data available in Humdrum (primary format), MIDI, MuseData, MusicXML and MEI.
- Primarily Josquin des Prez
- Currently 1,000,000+ notes/1,000 works





Data formats:

- | | | |
|---------------------|----------------------|---------------|
| PDF score | Humdrum file (plain) | MusicXML file |
| Score with ed. acc. | MuseData file | MEI file |
| MIDI file | NoteArray file | |

```
<measure n="1" xml:id="mx_sc_1">
  <staff n="1">
    <layer n="1">
      <rest xml:id="n_sc_29_3" dur="breve" dots="1"/>
    </layer>
  </staff>
  <staff n="2">
    <layer n="1">
      <note xml:id="n_sc_29_2" pname="g" oct="3" dur="breve"/>
    </layer>
  </staff>
  <staff n="3">
    <layer n="1">
      <rest xml:id="n_sc_29_1" dur="breve" dots="1"/>
    </layer>
  </staff>
  <staff n="4">
    <layer n="1">
      <rest xml:id="n_sc_29_0" dur="breve" dots="1"/>
    </layer>
  </staff>
</measure>
```

MEI data on the web (2)

<http://kern.ccarh.org/browse?l=371chorales>



KernScores

Local Search: Pitch ☐ anchored

[top](#) > [users](#) > [craig](#) > [classical](#) > [bach](#) > **371chorales** [\[i\]](#) [\[e\]](#)

Four-part chorales collected after J.S. Bach's death by his son C.P.E. Bach (and finished by Kimberger, J.S. Bach student, after C.P.E. Bach's death). Ordered by Breitkopf & Härtel numbers, and includes all chorales except #150 which is not 4-part. First complete edition by Breitkopf & Härtel from 1784–1787 in four volumes. [First incomplete edition consisting of 200 chorales in two volumes by Friedrich Wilhelm Birstiel in 1765 & 1769 which was reprinted in 1975 by Georg Olms]. This digital edition is referenced against the fourth edition of the chorales by Breitkopf & Härtel, c. 1875:

371 vierstimmige Choralgesänge von Johann Sebastian Bach. 4th ed. by Alfred Dörfel. Breitkopf & Härtel, Leipzig [c. 1875]. 178 pp. Plate Number: v. A. 10. Retypeset c. 1915 as Edition Breitkopf 10. Reprinted by Associated Music Publishers, Inc., New York [c. 1940].

Scans of the source edition can be viewed by clicking on the [\[S\]](#) button to the left of each chorale title. See [this chorale bibliography](#) at the Riemenschneider Bach Institute at Baldwin Wallace College for a good publication history of the Bach chorales. See also this article: [The History of the Breitkopf Collection of J.S. Bach's Four-Part Chorales](#) by Thomas Braatz. Click on the [\[Z\]](#) button below to download all Humdrum files in a single ZIP file.

[\[Z\]](#) [\[S\]](#) All chorales in grand-staff notation (177 pages) [7.8 MB]
[\[S\]](#) All chorales in vocal-score notation (254 pages) [8.8 MB]
[\[S\]](#) [\[H\]](#) [\[M\]](#) [\[K\]](#) 1. Aus meines Herzens Grunde, BWV 269
[\[S\]](#) [\[H\]](#) [\[M\]](#) [\[K\]](#) 2. Ich dank dir, lieber Herre, BWV 347
[\[S\]](#) [\[H\]](#) [\[M\]](#) [\[K\]](#) 3. Ach Gott vom Himmel sieh darein, BWV 153/1
[\[S\]](#) [\[H\]](#) [\[M\]](#) [\[K\]](#) 4. Es ist das Heil uns kommen her, BWV 86/6
[\[S\]](#) [\[H\]](#) [\[M\]](#) [\[K\]](#) 5. An Wasserflüssen Babylon, BWV 267
[\[S\]](#) [\[H\]](#) [\[M\]](#) [\[K\]](#) 6. Christus, der ist mein Leben, BWV 281

<http://kern.ccarh.org/data?file=chor001.krn&l=371chorales&format=info>



KernScores

1. Aus meines Herzens Grunde, BWV 269

Location	top > users > craig > classical > bach > 371chorales
Humdrum file	chor001.krn [i] [expanded repeats] [no repeats] [e]
Composer	Bach, Johann Sebastian
Composer's dates	21 Feb 1685 - 28 Jul 1750
Title: orig. lang.:	Aus meines Herzens Grunde
German	
Title: English	From the Depths of My Heart
Data Format	PDF Score: chor001.pdf Standard MIDI File: chor001.mid [without repeats]
Translations	Director Musices: chor001.mus Melisma Format: chor001.notes MusicXML: chor001.xml STK/SKIN: chor001.ski Guido: chor001.gmn [notation via noteserver.org] ABC+: chor001.abc [notation via abcm2ps] [number every bar] MusicData: chor001.msd [notation via music2ps] SA Sonorities: chor001.dat MEI: chor001.mei

<http://kern.ccarh.org/sdata?l=371chorales&file=chor001.krn&f=mei>

```
<?xml version="1.0" encoding="UTF-8" standalone="no"?>
<?oxygen SCHSchema="http://music-encoding.org/mei/schemata/2010-05/rng/mei-all.rng"?>
<?oxygen RNGSchema="http://music-encoding.org/mei/schemata/2010-05/rng/mei-all.rng"
  type="xml"?>
<mei xmlns:xlink="http://www.w3.org/1999/xlink" xmlns="http://www.music-encoding.org/
ns/mei" meiversion="2010-05">
  <meihead>
    <filedesc>
      <titlemt>
        <title type="main" xml:lang="ger">Aus meines Herzens Grunde</title>
        <title type="translated" xml:lang="eng">From the Depths of My Heart</title>
      </titlemt>
      <pubstmt/>
    </filedesc>
    <profiledesc>
      <language>
        <language xml:id="eng" authority="iso639-2"/><!-- English -->
        <language xml:id="ger" authority="iso639-2"/><!-- German -->
      </language>
    </profiledesc>
  </meihead>
  <music>
    <body>
      <mdiv>
        <score>
          <scoredef key.sig="1s" key.pname="g" key.accid="n" key.mode="major" meter.count="3"
            meter.unit="4">
            <staffgrp>
              <staffdef n="1" clef.shape="G" clef.line="2"/>
              <staffdef n="2" clef.shape="G" clef.line="2"/>
              <staffdef n="3" clef.shape="G" clef.line="2" clef.trans="8vb"/>
              <staffdef n="4" clef.shape="F" clef.line="4"/>
            </staffgrp>
            <!-- <secexpan repeat="true" label="default" ids="A A B"/> -->
            <!-- <secexpan repeat="false" label="norep" ids="A B"/> -->
          </scoredef>
          <section xml:id="A">
            <measure xml:id="mx_sc_13">
              <staff n="1">
                <layer n="1">
                  <note xml:id="n_sc_19_3" pname="g" oct="4" dur="4"/>
                </layer>
              </staff>
              <staff n="2">
                <layer n="1">
                  <note xml:id="n_sc_19_2" pname="d" oct="4" dur="4"/>
                </layer>
              </staff>
              <staff n="3">
                <layer n="1">
                  <note xml:id="n_sc_19_1" pname="b" oct="3" dur="4"/>
                </layer>
              </staff>
```

Verovio Humdrum Viewer

<http://verovio.humdrum.org>

Click on “?” button in top right corner,
From list at bottom of help menu, and after loading a work, type “alt-m”
To view the MEI data conversion.

The screenshot displays the Verovio Humdrum Viewer interface. The top bar shows the title "VerovioHumdrumViewer" and the file name "Beethoven, Piano Sonata no. 1 in F minor". A "Play" button is visible on the right. The left pane shows the XML data for the file, including the title "Piano Sonata no. 1 in F minor" and the tempo marking "Allegro". The right pane shows the musical notation for the first two measures of the piece, featuring a treble and bass staff with a 2/2 time signature. The notation includes a piano (p) dynamic marking and a triplet of eighth notes in the second measure.

```
1 <?xml version="1.0" encoding="UTF-8" ?>
2 <?xml-model href="http://music-encoding.org/sch
3 <?xml-model href="http://music-encoding.org/sch
4 <mei xmlns="http://www.music-encoding.org/ns/mei"
5 <meiHead>
6 <fileDesc>
7 <title>Piano Sonata no. 1 in F minor</title>
8 <pubInfo>
9 <respInfo>
10 <persName xml:id="persname-l"
11 </persName>
12 </respInfo>
13 </pubInfo>
14 </fileDesc>
15 <encodingDesc>
16 <appInfo>
17 <application isodate="2018-03-01"
18 <name>Verovio</name>
19 <p>Transcoded from Humdrum</p>
20 </application>
21 </appInfo>
22 <projectDesc>
23 <p>Encoded by: Craig Stuart Sapp</p>
24 <n>Version: 2011/01/30</n>
```

Verovio

<http://www.verovio.org>

Leipzig



Bravura



Gootville



SCORE



<http://rism-ch.github.io/verovio/smufi.xhtml>

Wolfgang

Wolfgang est développé dans le cadre de l'Université de Genève par Etienne Darbellay, musicologue et informaticien.



Largo

Violino Primo

Violino Secondo

Basso

P

F

6 4 5 3 6 4 5 3 6 4 5 3 6 4 5 3

A musical score snippet for Violino Primo, Violino Secondo, and Basso. The tempo is marked 'Largo'. The Violino Primo part has a melody with triplets and a fermata. The Violino Secondo part has a similar melody. The Basso part has a bass line with triplets and a fermata. The score includes dynamic markings 'P' and 'F', and fingering numbers 6, 4, 5, 3.

Wolfgang supporte désormais l'importation de fichiers au format GUIDO. Cette fonction permet l'échange avec d'autres applications (logiciels de reconnaissance de musique ou autres logiciels d'édition).

Verovio (2)

MEI

```
<tuplet xml:id="t1" num="3" numbase="2">
  <beam xml:id="b1">
    <note xml:id="n1" pname="d" oct="5" dur="8" />
    <note xml:id="n2" pname="e" oct="5" dur="16" dots="1"/>
    <note xml:id="n3" pname="d" oct="5" dur="32" />
    <note xml:id="n4" pname="c" oct="5" dur="8" accid="s"/>
  </beam>
</tuplet>
<beam xml:id="b2">
  <tuplet xml:id="t2" num="3" numbase="2">
    <note xml:id="n5" pname="d" oct="5" dur="8" />
    <note xml:id="n6" pname="e" oct="5" dur="16" dots="1"/>
    <note xml:id="n7" pname="f" oct="5" dur="32" accid="s"/>
    <note xml:id="n8" pname="e" oct="5" dur="8" />
  </tuplet>
</beam>
```

SVG

```
<g class="tuplet" id="svg-t1" >
  <g class="beam" id="svg-b1" >
    <g class="note" id="svg-n1" >...</g>
    <g class="note" id="svg-n2" >...</g>
    <g class="note" id="svg-n3" >...</g>
    <g class="note" id="svg-n4" >...</g>
  </g>
</g>
<g class="beam" id="svg-b2" >
  <g class="tuplet" id="svg-t2" >
    <g class="note" id="svg-n5" >...</g>
    <g class="note" id="svg-n6" >...</g>
    <g class="note" id="svg-n7" >...</g>
    <g class="note" id="svg-n8" >...</g>
  </g>
</g>
```



Verovio (3)

RISM / Plaine & Easie code



```
@clef:C-4  
@keysig:xFC  
@timesig:c/  
@data:,{8.A6A}/'4.Dt8D4.Ct8D/{8.E6C},8(A)'E4DtE/{8.Ft3GE}8(D)-2-/
```


The Lost Voices Project

Sibelius

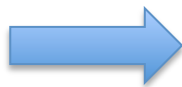
Anonyme

Superius
Contratenor
Tenor
Bassus

Mai - stre Lu - bin de sang ras - sis, Dict un jour



```
<measure xml:id="m-631fc7fb-ae5e-47d5-9107-661aeb0de4a0" label="1" n="1">
  <staff xml:id="m-50728736-cd3f-4554-b9e8-62d35c90524b" n="1">
    <layer xml:id="m-0cbcd0b4-48ef-477d-90ac-c4baff4a0592" n="1">
      <note xml:id="m-a5eb13d9-10f7-42e9-b441-adbc5d1f0f3f" n="1">
        </note>
      </layer>
    </staff>
    <staff xml:id="m-179452a1-1514-4dd3-afee-6144461bcb0b" n="2">
      <layer xml:id="m-ebd5f970-717b-42ce-9569-39aa8550ef51" n="1">
        <note xml:id="m-0f36c996-7ca5-43e8-9b82-8903d05b5fe7" n="1">
          </note>
        </layer>
      </staff>
      <staff xml:id="m-af5eb619-06c6-41c3-8ee0-467602e11765" n="3">
        <layer xml:id="m-3fa02c47-e5f4-4710-abab-5bc728e8015e" n="1">
          <note xml:id="p1cad3n0v1b2a3" dur="2" dur.ges="512p" oet="3" pname="a">
            <verse xml:id="m-697c6e66-c394-4ebd-9928-el7e5ca11f6d" n="1">
              <syll xml:id="m-bd82da7a-a79c-4c5f-9bab-4748d004f3b" con="d" wordpos="i">Mai</syll>
            </verse>
          </note>
          <note xml:id="p1cad3n512v1b2a3" dur="4" dur.ges="256p" oet="3" pname="a">
            <verse xml:id="m-01ae27f6-0346-4163-81b9-b5ee8dcd6501" n="1">
              <syll xml:id="m-6e8f26c1-887b-4c6a-9373-e5b009933349" wordpos="t">stre</syll>
            </verse>
          </note>
          <note xml:id="p1cad3n768v1b2a3" dur="4" dur.ges="256p" oet="3" pname="a">
            <verse xml:id="m-f245de4-a79a-4932-a929-dc97ca4332cd" n="1">
              <syll xml:id="m-ac57c2e2-a91c-49b9-a104-76162cde76d0" con="d" wordpos="i">Lu</syll>
            </verse>
          </note>
          <note xml:id="p1cdd4n1024v1b2a3" dur="2" dur.ges="512p" oet="4" pname="d">
            <verse xml:id="m-9d4af2d2-0240-4d60-8022-2a914987ca2a" n="1">
              <syll xml:id="m-fd2b5692-94b2-4d48-b018-46441527a61b" wordpos="t">bin</syll>
            </verse>
          </note>
          <note xml:id="p1cdd4n1536v1b2a3" dur="2" dur.ges="512p" oet="4" pname="d">
            <verse xml:id="m-73af0ab0-959e-4c45-aa69-15c150d43204" n="1">
              <syll xml:id="m-04d4edde-88fa-4c21-8d40-a94f08f6165e" wordpos="t">de</syll>
            </verse>
          </note>
        </layer>
      </staff>
      <staff xml:id="m-27930938-d5f2-49ef-b74f-4642f5275c36" n="4">
        <layer xml:id="m-688f2ddf-215f-48d9-9882-b39edafbf0f0" n="1">
          <rest xml:id="p1r0v1b2a4" dur="1" dur.ges="1024p"/>
          <note xml:id="p1cdd3n1024v1b2a4" dur="2" dur.ges="512p" oet="3" pname="d">
            <verse xml:id="m-2f781958-6142-42b1-8dca-71f67deaad85" n="1">
              <syll xml:id="m-dd0e7c36-ff31-4305-87a1-0682e174ae15" con="d" wordpos="i">Mai</syll>
            </verse>
          </note>
          <note xml:id="p1cdd3n1536v1b2a4" dur="4" dur.ges="256p" oet="3" pname="d">
            <verse xml:id="m-08ab3cad-af6b-4f2b-a61c-85ef11bd43ed" n="1">
              <syll xml:id="m-426c4ee4-3e10-461d-4ddd-6e70b3e63fca" wordpos="t">stre</syll>
            </verse>
          </note>
          <note xml:id="p1cdd3n1792v1b2a4" dur="4" dur.ges="256p" oet="3" pname="d">
            <verse xml:id="m-74105320-42b6-4233-b5320-4d0b2ba4a54" n="1">
              <syll xml:id="m-d61b005b-263e-484e-9afb-41beab596c9b" con="d" wordpos="i">Lu</syll>
            </verse>
          </note>
        </layer>
      </staff>
    </measure>
```



Music

Superius
Contratenor
Tenor
Bassus

Mai - stre Lu - bin de sang ras - sis, Dict un jour à sa cham hri -

Search the Liber Usualis

What is this? Find out more about what we are trying to do.

edcdee Strict pitch sequence

Result 1 of 40 for edcdee

4. **S** Anctus, * Sanctus, Sanctus Dóminus Dé-us Sá-
ba-oth. Pléni sunt caéli et térra gló-ri-a tú-a. Hosánna
in excél-sis. Benedíctus qui vé-nit in nómine Dómi-
ni. Hosánna in excél-sis.

4. **H** -gnus Dé-i, * qui tóllis peccáta mún-di : mi-se-ré-
re nó-bis. Agnus Dé-i, * qui tóllis peccáta mún-di : mi-
se-ré- re nó-bis. Agnus Dé-i, * qui tóllis peccáta mún-di : mi-
dóna nó-bis pá-cem.

SIMSSA

<http://simssa.ca>

```
<section xml:id="m-d4003b3d-2bfd-4c4b-94ca-67a0be759138">
  <pb xml:id="m-c0edd2aa-97fb-44bc-ace2-6805117cbcfb" pageref="m-9efc6892-00dc-40a8-b846-d5103b5d6c5b"/>
  <staff xml:id="m-a0fc2342-b7dc-4ea9-b69a-394a5f611aa3" n="1">
    <layer xml:id="m-14bcefea-4151-42b3-966b-7e8df7ea0bd2" n="1">
      <sb xml:id="m-ad95e44d-1544-4183-91b5-6e97ac6db978" systemref="m-b427c9dc-982e-4949-a64a-30313d39ca0f" n="1"/>
      <clef xml:id="m-a49e570c-9980-4166-8fd9-ed280c5b466b" facs="m-d87e4c78-f37a-41a9-99ad-71aa4b34f9b1" line="4" shape="C"/>
      <neume xml:id="m-02008ebb-ea11-4351-8f4e-03cf3fb08e9a" facs="m-a77b23bc-32be-4b43-9063-5157e4dc5de3" name="clivis">
        <nc xml:id="m-f35a6c87-6051-41ba-a442-2e22e1cee7c4">
          <note xml:id="m-6a2dc70c-962b-4f98-9f43-7371d18e6c8c" pname="c" oct="4"/>
          <note xml:id="m-2b6e6aa1-e7c5-4203-9fc1-5594f6179124" pname="b" oct="3"/>
        </nc>
      </neume>
      <neume xml:id="m-6e0a628b-7cf6-42cb-ae46-bae9e9846d84" facs="m-7f5c6db5-7224-4207-98fd-6dc6c96b8c32" name="clivis">
        <nc xml:id="m-709472fd-f90b-4782-871d-ee1412ffa6c7">
          <note xml:id="m-1907dbf2-398a-43b5-b48c-f2bc28647e9f" pname="a" oct="3"/>
          <note xml:id="m-75662fad-a940-4e9c-9261-ad18ed9daeb6" pname="g" oct="3"/>
        </nc>
      </neume>
      <neume xml:id="m-9a7bd290-e7d0-43eb-a2ff-8d69d0eef377" facs="m-acc01077-c0e1-49fd-8b43-e0e8f2b3baee" name="clivis">
        <nc xml:id="m-64b7f94f-d33c-4425-a23b-c493a12d32d3">
          <note xml:id="m-7b449a13-9262-4b91-acb2-5f5587e8cb77" pname="c" oct="4"/>
          <note xml:id="m-d1816620-0a3c-4432-9074-cd34e56189fe" pname="b" oct="3"/>
        </nc>
      </neume>
      <neume xml:id="m-b9ceaaab-3ba2-429e-97d7-f9d9e7ecald6" facs="m-174a3794-7e71-4d55-a627-010179e2720e" name="podatus">
        <nc xml:id="m-ee05e0eb-3af6-402b-aa6f-a7fa853a90a6">
          <note xml:id="m-194bccfa-99d4-4c86-a796-704bb4bd0f24" pname="c" oct="4"/>
          <note xml:id="m-031db55b-3e92-4e05-a46d-58f57c90c749" pname="d" oct="4"/>
        </nc>
      </neume>
      <episema xml:id="m-b0cee576-ef75-454f-809d-c88976551c48" startid="m-c6928df5-1449-4f38-a883-edb8ee294422" form="vertical"/>
      <neume xml:id="m-30fba4f2-9a58-4801-9487-5fe862d2c979" facs="m-2908161f-5eb5-4b38-9520-161f9fc9846c" name="punctum">
        <nc xml:id="m-6032b649-b915-48d9-ab03-459929e754e5">
          <note xml:id="m-c6928df5-1449-4f38-a883-edb8ee294422" pname="c" oct="4"/>
        </nc>
      </neume>
    </layer>
  </staff>
</section>
```

